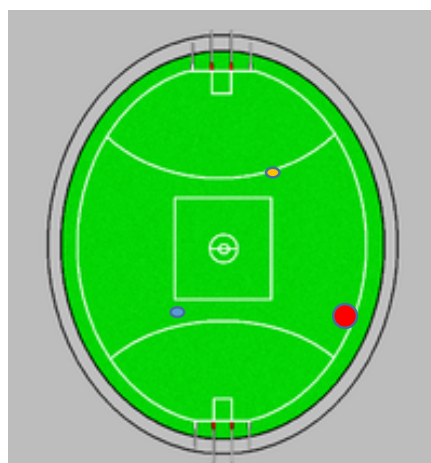
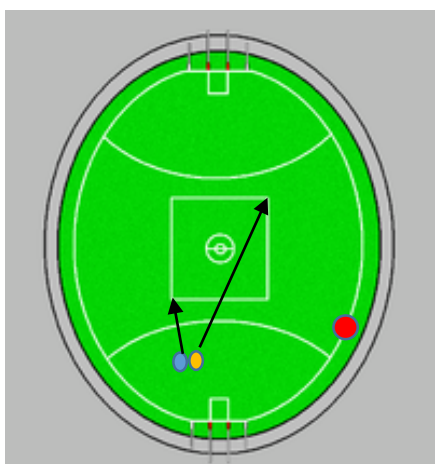
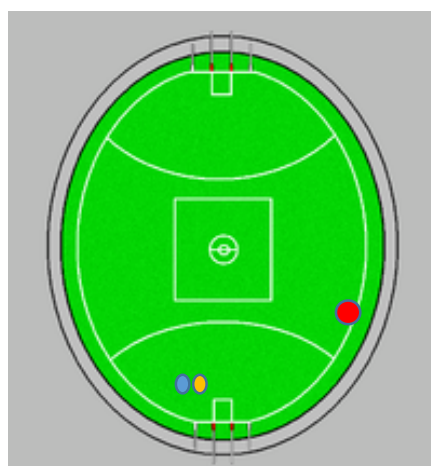
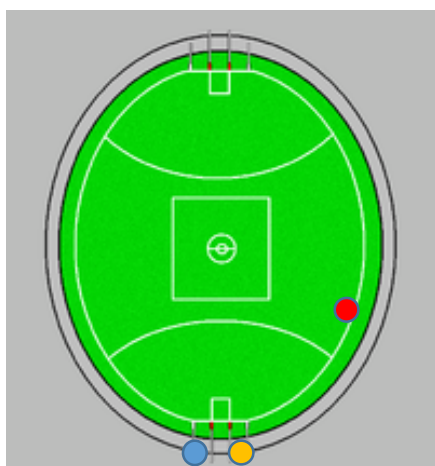


2019 SFNL Boundary – Returning the ball back to the field umpire after a goal

In 2019, we will be implementing a slightly different way to return the ball back to the field umpire. The majority of how will do this will be the same as previous years, with just a change in where we position ourselves when we leave the post for a run up the middle (to return ball to field umpire)

This year, the following will occur:

- The run will be completed on the side that the umpire is doing the short run. E.g. if the umpire doing the short run, is on the left behind post, this is the side you will complete the run together before handing off the ball and vice versa – See diagram if stuck when explaining it



- The reason why we are doing this is because too often last year;
 - There were players standing in the corridor inside the arc, which means umpires were dodging players to get the ball back to the middle
 - Also, the umpire doing the short run at times was running parallel with the centre square to get to the corner and not running diagonally (Which meant the handoff was too late or umpires didn't have time to hand off due to players being in the corridor inside the arc).

- By doing this:
 - The umpire doing the short run will have more direct line to running to the short corner
 - The umpire doing the long run, will do everything the same as previous years, expect for the starting position.